

# Pendant

## INSTRUCTION MANUAL

### Safety Warnings

These products are only suitable for connection to a 220-240V~50Hz supply in accordance with current IEE wiring Regulations and should be installed in accordance to local UK Building Regulations and are for Domestic ceiling use only and not suitable for a Bathroom location.

The light fitting should be connected to a lighting circuit protected by a 5 amp fuse (or a 6 amp miniature circuit breaker).

If in doubt we recommend you contact a qualified electrician. Before installing your light fitting always:

Switch off the mains supply and remove the appropriate fuse or switch off the appropriate circuit breaker before commencing installation.

Ensure that no one else has access that would enable the supply to be inadvertently reconnected.

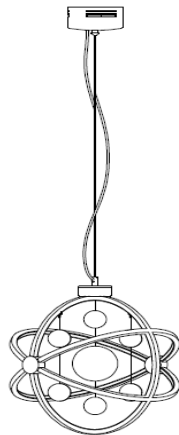
This product contains glass parts – be careful during handling and maintenance to avoid breakage.

This fitting uses none-replaceable LED`s. We recommend that you do not stare directly into the light beam.

Clean with a dry cloth only. Do not use liquid or abrasive cleaners on this product.

This fitting is heavy / awkward and you may require assistance in connecting it to the supply and securing it to the mounting surface. When fixing to the mounting surface ensure that the fixings used are appropriate for the mounting surface on which they are being used.

If any modification is made it will invalidate the warranty and may render the product unsafe.



### Before you start

**Please read these instructions carefully before fitting your new light and retain for reference.**

**Make sure that there are no pipes or cables beneath the mounting surface.**

Check the packaging and make sure that you have all the required parts.

Follow each assembly step in order to prevent incorrect assembly.

Make sure all screws / nuts, including electrical connections etc are fully tightened before use.

**This type of Light Fitting cannot be connected to a Dimmer.**

#### The Light pack contains:

Light fitting with decorative glass balls.

Terminal connection block(s).

#### The following tools may be required:

Selection of cross and flat head screwdrivers.

Electric drill and assorted drill bits.

Wire strippers.

Electrical insulation tape.

# Assembly/ User Instructions

These assembly diagrams are intended as a guide – if in doubt consult a qualified electrician.

Diagram A

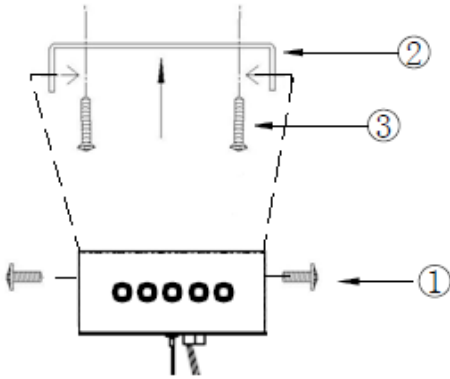
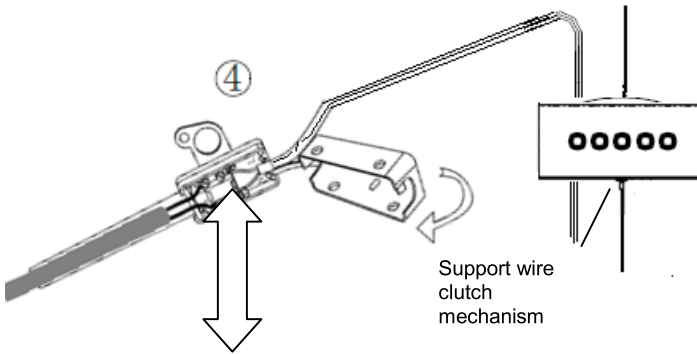


Diagram B



④ Details of terminal wiring.

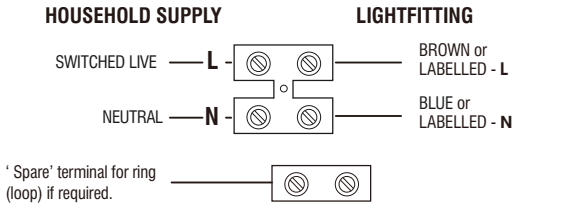
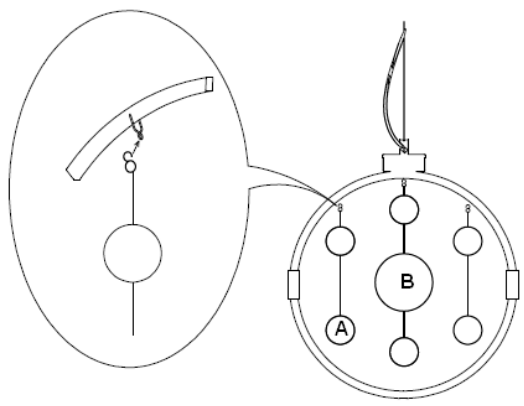


Diagram C

NO	PARTS LIST	Qty
A		4
B		1



- EN Scan QR code for multi-language
- FR Scannez le code QR pour plusieurs langues
- ES Escanee el código QR para varios idiomas
- PL Zeskanuj kod QR dla wielu języków
- DE Scannen Sie den QR-Code nach mehreren Sprachen
- IT Scansiona il codice QR per multilingua

1. Decide on the position of the light fitting / or remove existing light fitting. Take a note of the position of the electrical connections. Ensure there is a solid mounting surface, preferably a wooden joist or joist bridge to support the weight of the light fitting.
2. **Diagram A.** Remove the fixing bracket, by undoing the 2 side screws (1), retain these for re-use.
3. Use the fixing bracket (2) as a template to mark the screw holes, mark the screw holes and secure to the ceiling with the screws (3) supplied.
4. **Diagram B.** The length of the `drop` may be reduced by shortening the cable / support wire. If you want to reduce the overall length of the fitting it is essential that this is done before the fitting is mounted to the ceiling and / or connected to the mains supply. To do this, shorten the length of the **support wire** by pushing up the centre of the support mechanism (which acts as a clutch) and pull the wire up through and into the ceiling cup. When you reach the desired overall length release the centre clutch – this will then grip the support wire. We recommend that the minimum distance between the ceiling cup and the top of the fitting is 100mm. The LV cable can be loosely curved around the support wire. **NOTE: The electric cable must always be longer than the support wire to prevent strain being placed on the cable.**
5. Support your fitting and connect the house wiring to the terminal block (4) – see also details of terminal wiring. **NOTE: This is a Class II fitting and must not be earthed. If you have any earth cables make sure that they are connected to each other – to maintain earth continuity throughout your property – and wrap the earth terminal and connections in 2 layers of good quality insulation tape and keep them away from the terminal connections of the fitting.** Open the terminal block box and take out the long tailed grommet, sliding it up the house supply cable. Cut and strip the cable and connect it to the terminal block as shown. Close the box. The additional single terminal block connector is used for the “loop” wires of the “Ring Circuit”. There may be more than one set of cables in the “loop” connections. This additional connector must be wrapped in 2 layers of good quality insulation tape to prevent the conductors touching the main terminal block connections or the metal of the fitting. **If there is a “Ring Circuit” and you do not understand the connections you must consult an electrician.**
6. Secure the fitting back onto the fixing bracket with the 2 side screws (1), removed in 2 above. Make sure that all the internal cables and connections are inside the Ceiling cup taking care not to trap or strain the internal cables.
7. **Diagram C.** Carefully hang the decorative glass ball assemblies onto the frame according to the diagram.
8. Turn on the power and test.